



proud past, promising future

CLARK COUNTY
WASHINGTON



* 7 0 8 4 6 1 *

CP16#0336

Clark County Planning Commission

Steve Morasch, Chair
Valene Uskoski, Vice Chair
Ron Barca
Eileen Quiring
Karl Johnson
John Blom
Richard Bender

**CLARK COUNTY PLANNING COMMISSION
THURSDAY, OCTOBER 16, 2014**

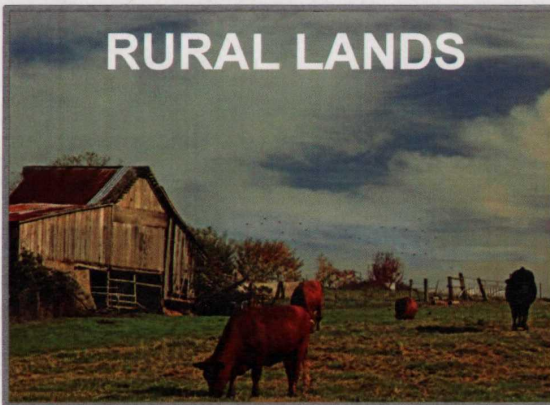
**5:30 – 6:00 p.m. – WORKSESSION
BOCC TRAINING ROOM, 6TH FLOOR
PUBLIC SERVICES BUILDING
1300 FRANKLIN STREET
VANCOUVER, WA**

AGENDA

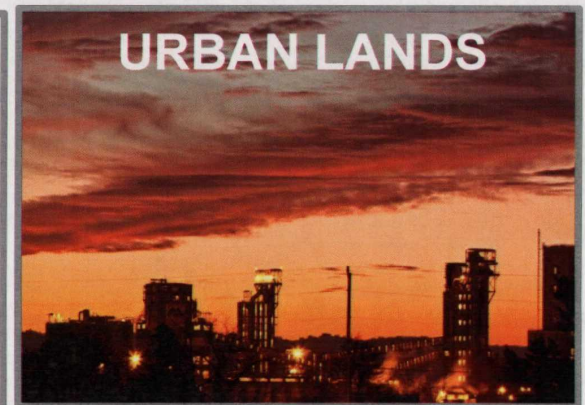
- | | | |
|---|-------|------------|
| 1) Welcome/Call to Order | Chair | 5 minutes |
| 2) Comp Plan Chapter 7
New Text for Transportation Chapter | Gary | 25 minutes |
| 3) Adjournment | | 5 minutes |

Clark County 2015-2035 Comprehensive Plan Review Map Alternatives

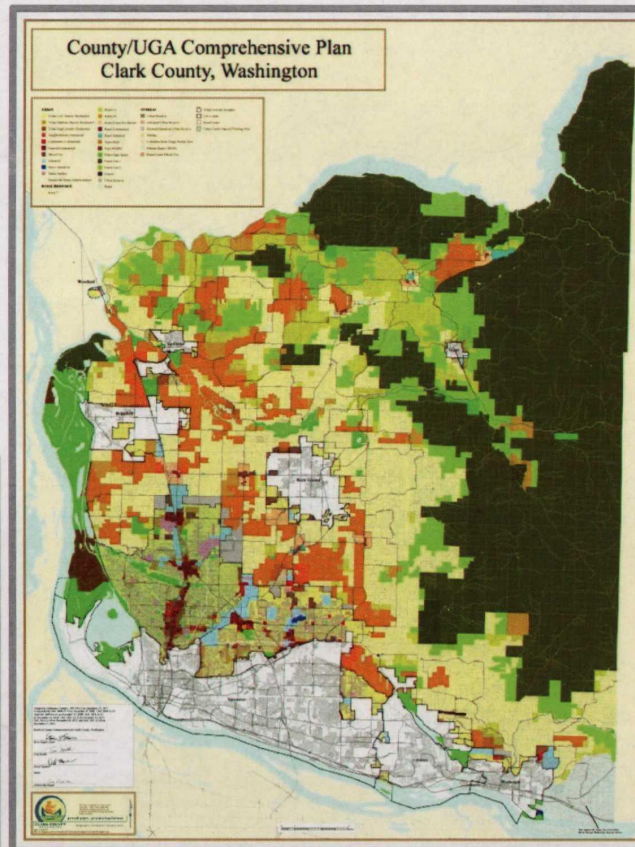
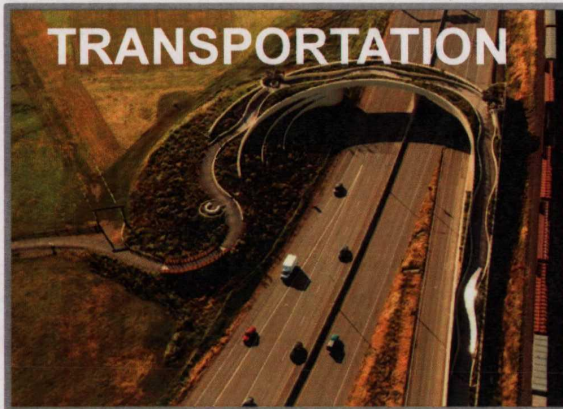
RURAL LANDS



URBAN LANDS



TRANSPORTATION



PUBLIC FACILITIES



Oliver Orjiako, Director, Community Planning



PC Work Session, October 16, 2014

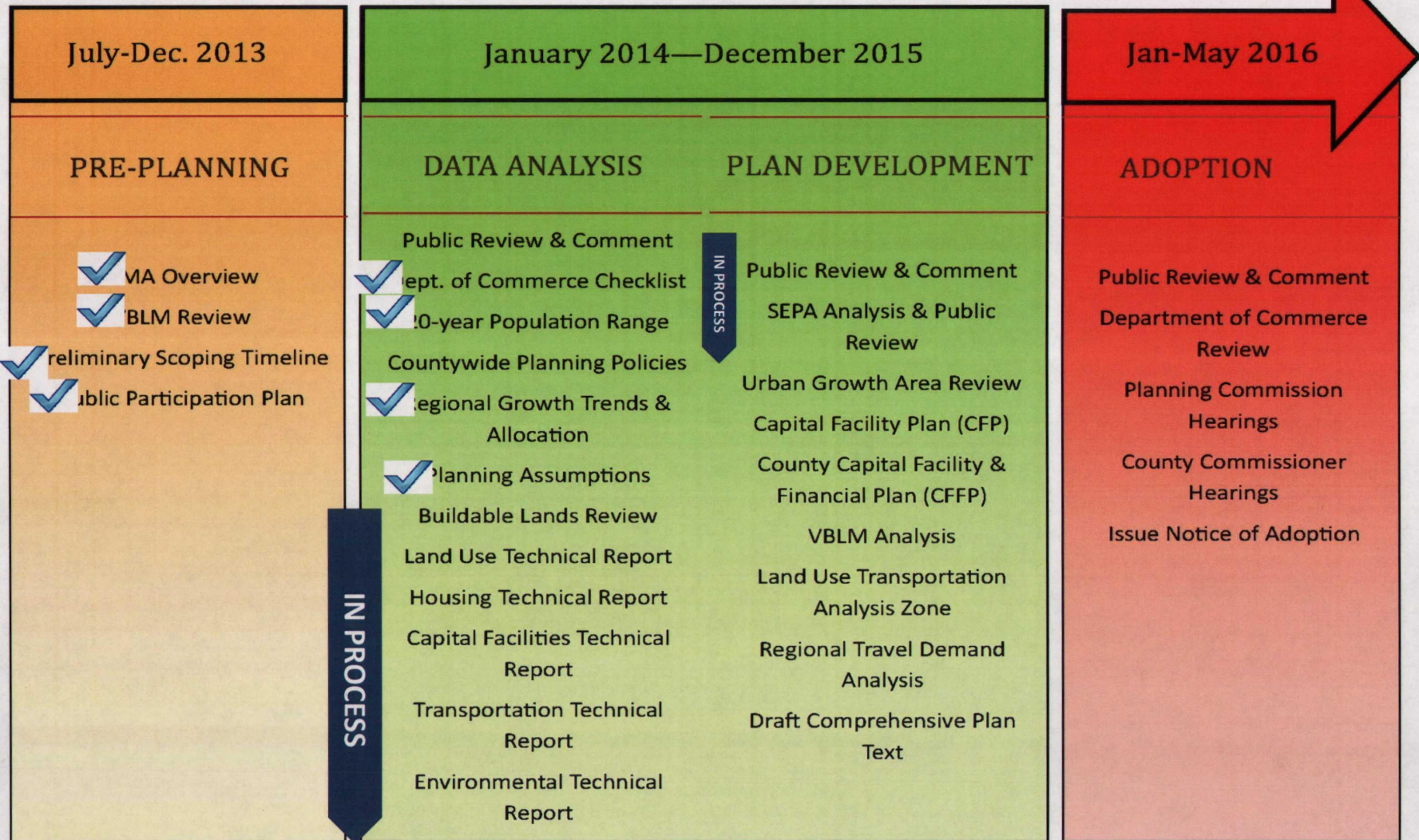
Agenda

1. Purpose of the meeting

- a. Progress to date
- b. Comp plan map vs Zoning map
- c. Alternatives
- d. Transportation

2. Next steps

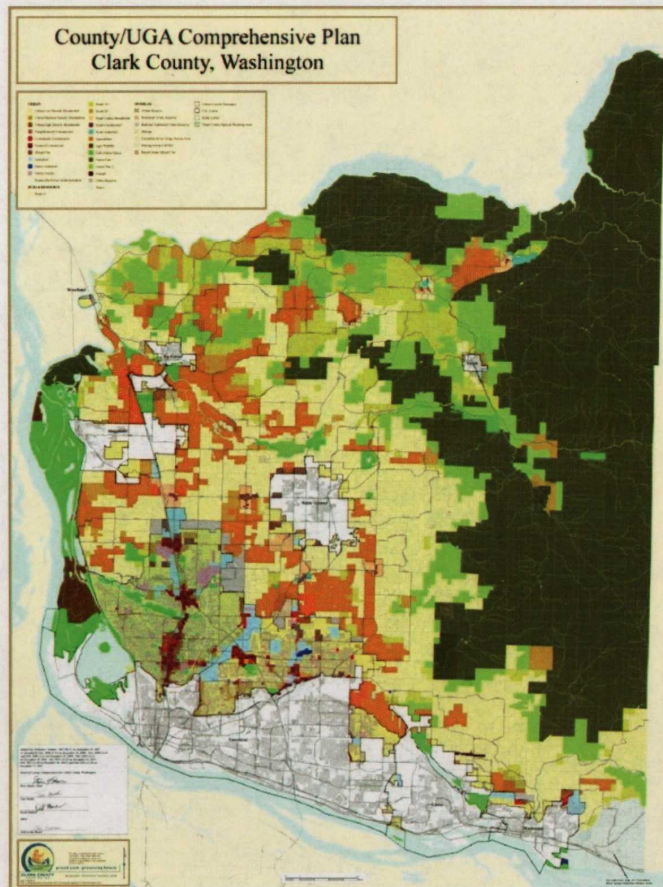
2016 Comprehensive Plan progress to date



Comp Plan Map? Zoning Map? What's the difference?

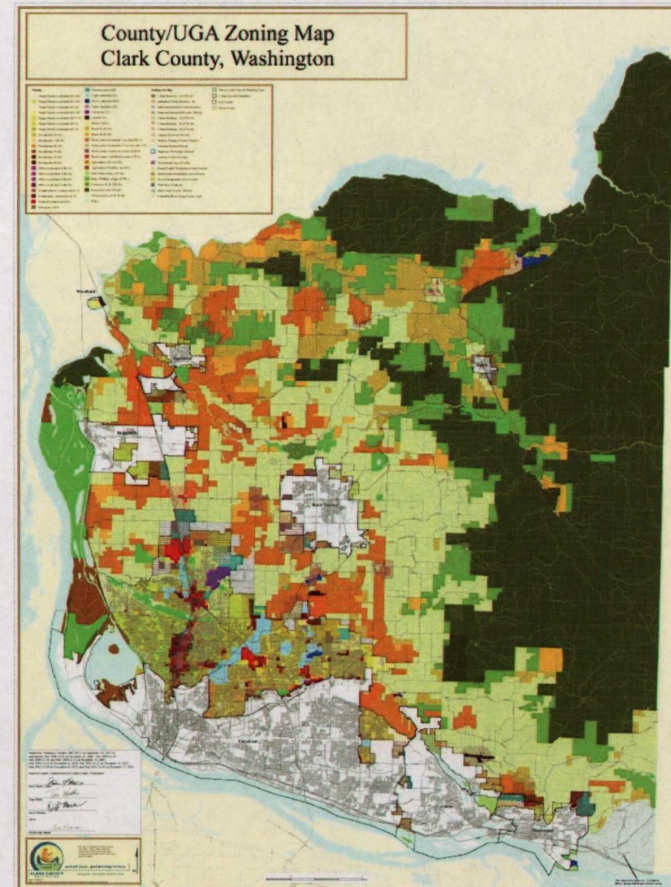
Comprehensive Plan Map:

Shows land uses and scale of development needed to accommodate population and job growth over the next 20 years



Zoning Map:

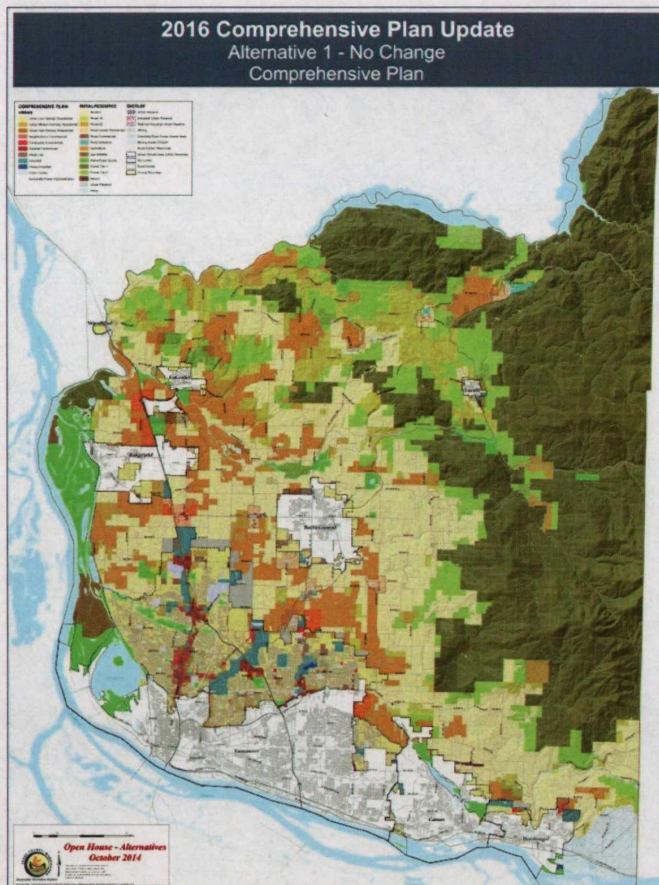
Specifies the types of land uses, setbacks, lot size, and size restrictions for buildings within each zone



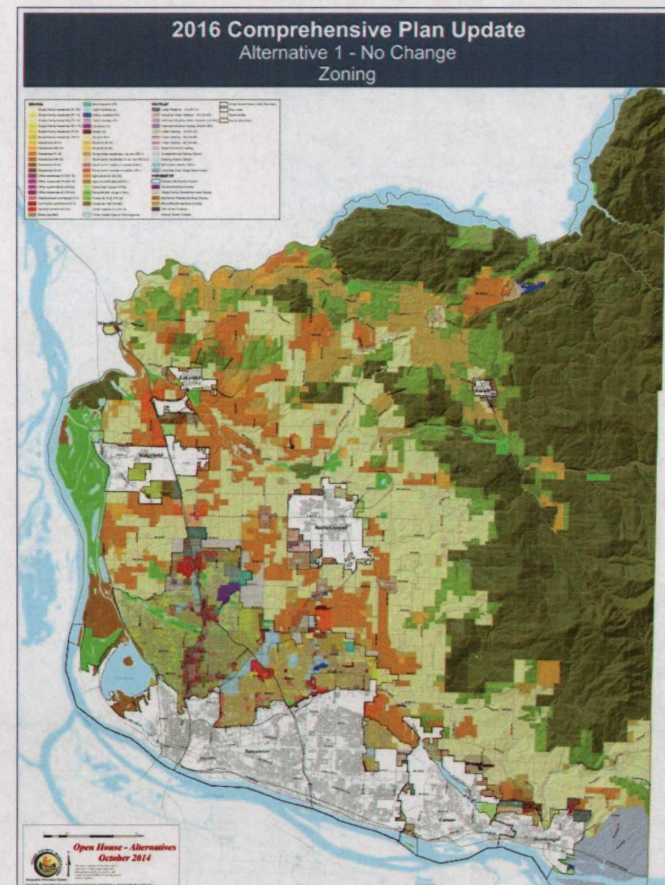
Alternative 1 – No action

No Action Alternative would be the adopted 2007 Comprehensive Growth Management Plan, as amended, including current urban growth boundaries, planning assumptions, policies and implementation ordinances.

Comprehensive Plan map



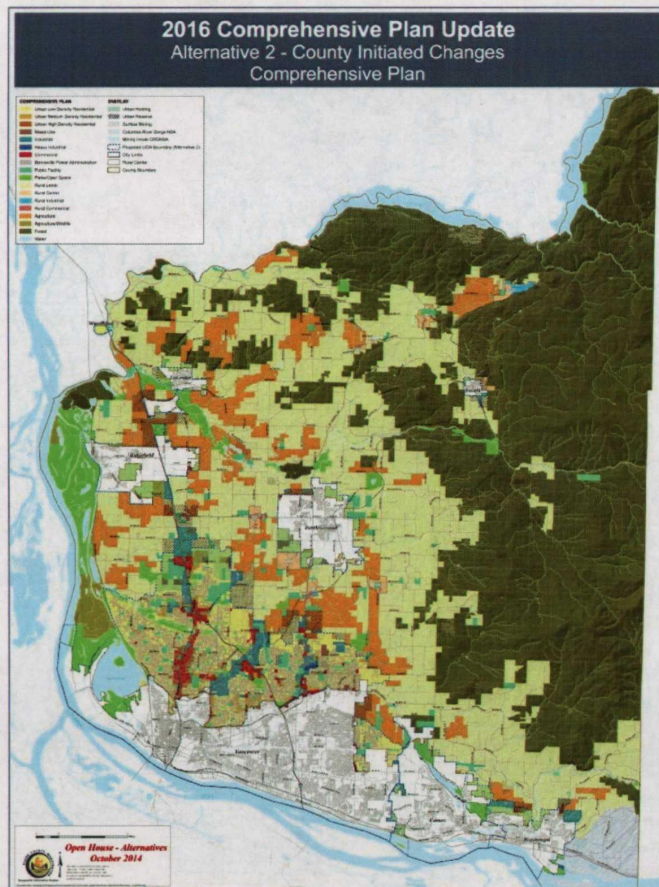
Zoning map



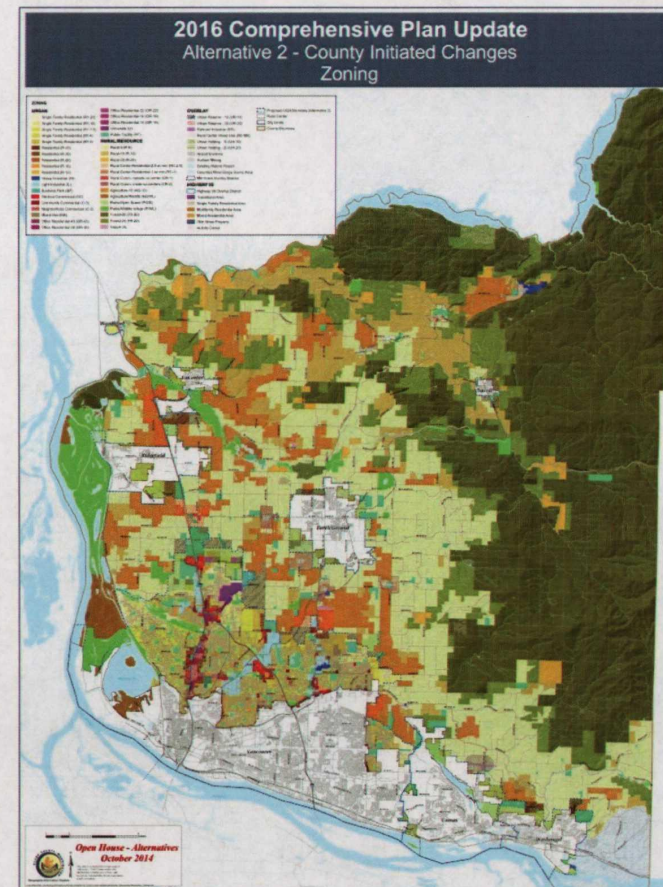
Alternative 2 – County initiated changes

The new planning assumptions, policy direction, changes in land use/zoning, and principles and values defined by the commissioners will be used in this alternative.

Comprehensive plan map



Zoning map



Alternative 2 – County initiated changes

The new planning assumptions, policy direction, changes in land use/zoning, and principles and values defined by the commissioners will be used in this alternative.

Rural County

Minimum acre changes for AG-20, FR-40 and some R-20



Washougal UGA

Correcting zoning map inconsistency between county and city zoning



Vancouver UGA

Land use changes to support job growth in Salmon Creek/Discovery area



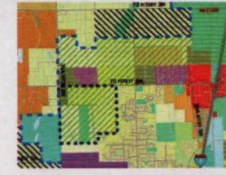
Battle Ground UGA

Land use changes from industrial to residential to reflect current development



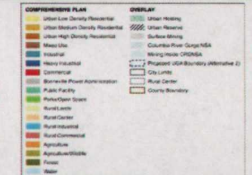
Urban Reserve

Removal of overlay in North Salmon Creek area to reflect current development trends



Mixed Use

Matching comp plan designation to zoning



Ridgefield UGA

UGA expansion to enhance the city's recreational opportunities



Urban Holding

Removal of overlay to reflect current development trends



Public Facility

Creation of a Public Facility zone to identify publicly owned facilities



Alternative 2 – County initiated changes

Comprehensive plan map updates and clean up

1. Consolidation of comprehensive plan land use designations

- **Rural:** Consolidate multiple Rural comp plan designations (R-5, R-10, R-20) to one **Rural (R)** designation
- **Forest:** Consolidate two Forest comp plan designations (Forest Tier I and Forest Tier II) to one **Forest (F)** designation
- **Commercial:** Consolidate multiple urban commercial comp plan designations (Neighborhood, Community and General) to one **Commercial (C)** designation

2. Surface Mining Overlay

- Implement the SMO comp plan and zoning overlay based on BOCC direction from June 3, 2014 hearing

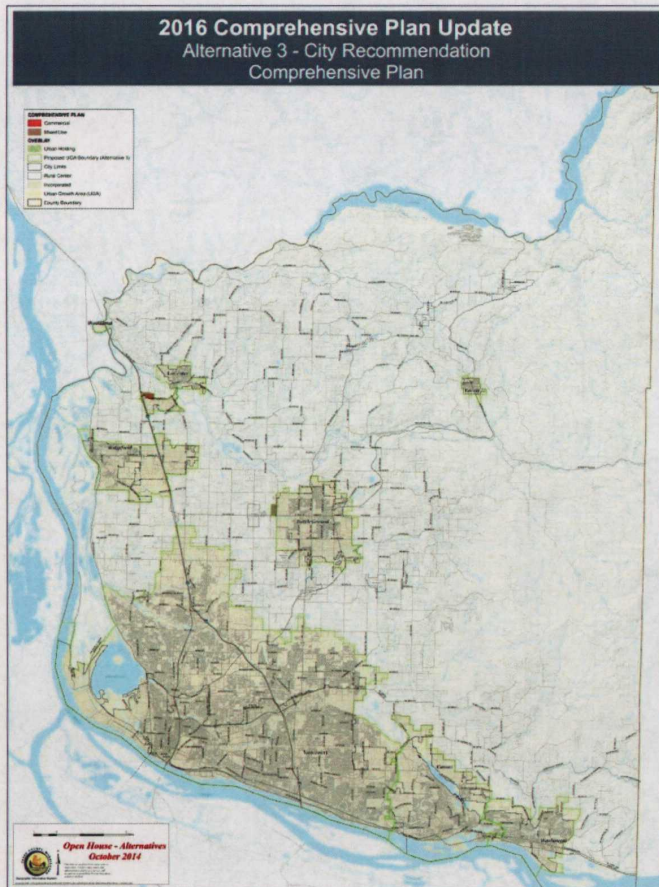
3. Removal of Three Creeks Special Planning Area overlay

- Work will be completed with 2016 Comprehensive Growth Management Plan update

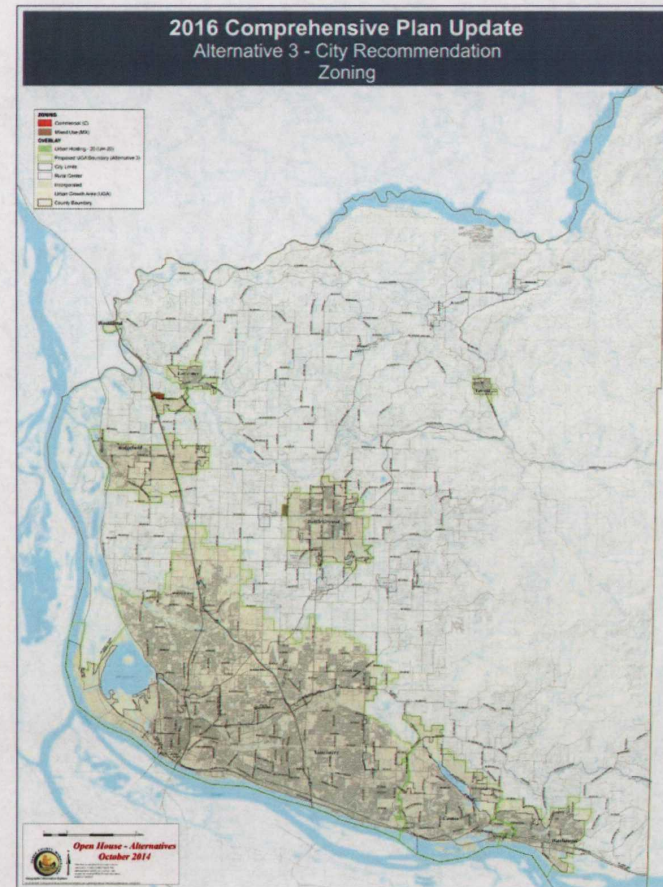
Alternative 3 – City initiated changes

The cities of Battle Ground and La Center are considering expanding their urban growth areas to support job growth.

- Comprehensive plan map



- Zoning map



Transportation

TRANSPORTATION SYSTEM CAPITAL FACILITIES PLAN

The CFP is the 20-year plan for road projects the county reasonably expects to be constructed. It prioritizes how and when these transportation projects will be built to support future growth as envisioned by the comprehensive plan

TRANSPORTATION SYSTEM ARTERIAL ATLAS

The Arterial Atlas Map is the long range regional roadway system plan of the comprehensive plan. The atlas outlines the transportation choices for residents, employees, visitors and firms doing business in Clark County. Streets are depicted by their functional classification or as a new proposed street. Classifications describe the types of motor vehicle, bicycle and pedestrian movement that should be emphasized on each street

Share your comments

Provide testimony online or by email, letter or comment form. Comments must be received by 5:00 p.m. on Tuesday, November 18, 2014 so the analysis work can begin on the Alternatives.

Online	www.clark.wa.gov/planning/2016update/comments/html
Email	Send to: comp.plan@clark.wa.gov Put "Comprehensive Plan Alternative Testimony" in the subject line. Include your name and mailing address.
Letter	Mail your comments to: Clark County Community Planning Comprehensive Plan Alternatives P.O. Box 9810 Vancouver, WA 98666-9810
Open House comment form	Attend an open house: Oct. 29, 2014 at 5:30 p.m. Gaiser Middle School 3000 NE 99 th Street, Vancouver October 30, 2014 at 5:30 p.m. Clark County Fire & Rescue 911 N. 65 th Avenue, Ridgefield

Next Steps

Alternatives
Open Houses
October 29 & 30, 2014

Draft Supplemental
Environmental Impact
Statement completion
January 2015

Joint BOCC/PC Hearing
February 2015

Final Supplemental
Environmental Impact
Statement completion
May/June 2015

Questions?



www.clark.wa.gov/planning/